

NeuHaven Closeout LLC

Antioch, IL 60002

P 847.395.8300

F 847.395.8308

1053 Deertrail Court / Lot 294

B *Brilliant two-story home with living room/dining room combo, kitchen with pantry and dinette, large family room with fireplace and den. Four bedrooms including master with walk-in closet, cathedral ceiling, and luxury bath. Second floor laundry. 2-1/2 baths including master. 3-car garage. Full basement.*

2,575 Sq. Ft. (Approx.)

4 Bedrooms

2.5 Bathrooms

3 Car Garage

(3 car garage not shown on illustration below)

Illustration above including exterior styling, materials, color scheme and landscaping is artist's concept. Actual construction may vary from artist's depiction.

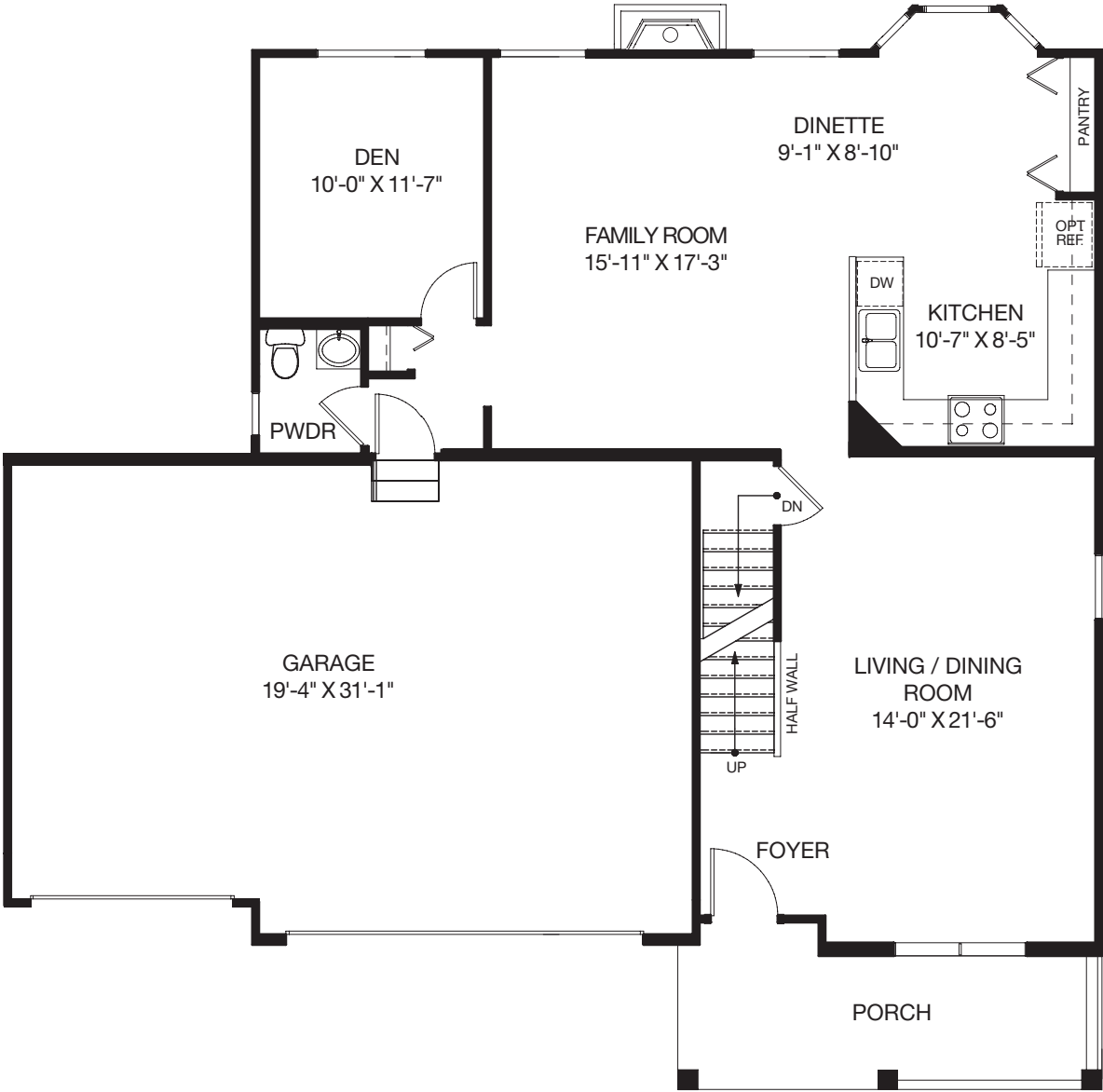
In a continuous effort to improve our product, developer reserves the right to change specifications, equipment features, dimensions, prices, and/or plans without notice. All dimensions shown are approximate and plans are not to scale.

March 24, 2009

NeuHaven Closeout LLC

Antioch, IL 60002
P 847.395.8300
F 847.395.8308

1053 Deertrail Court / Lot 294



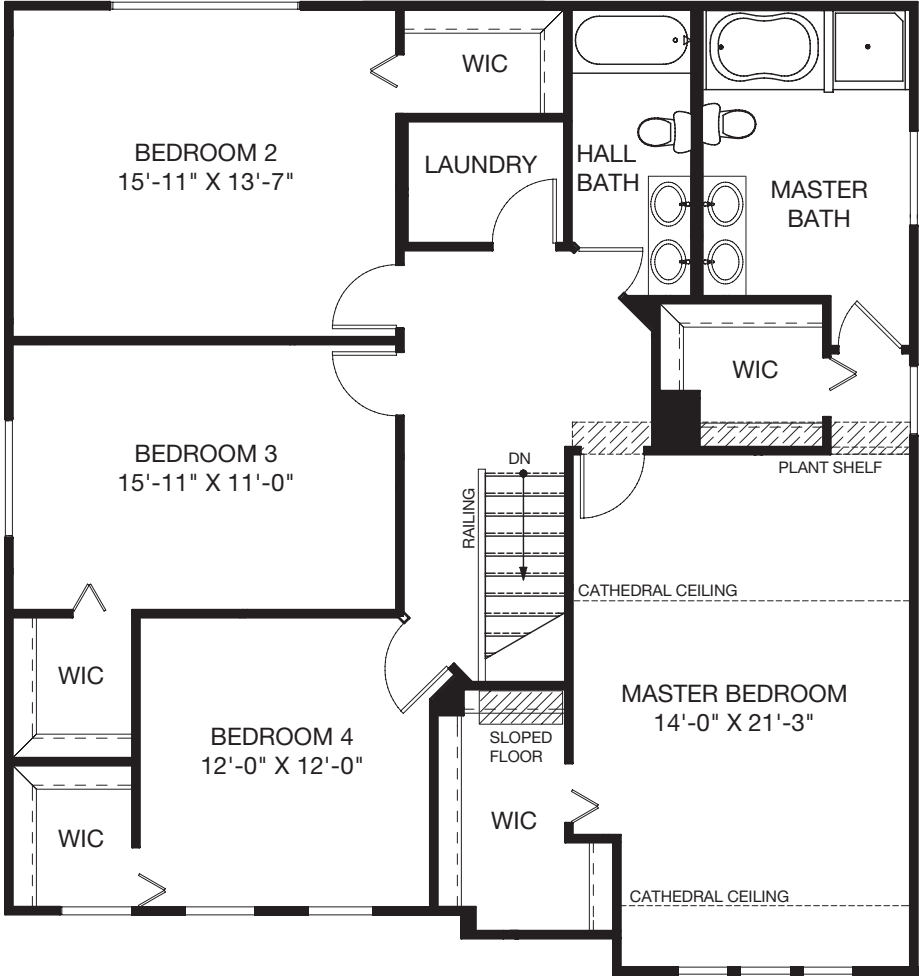
First Floor Plan

In a continuous effort to improve our product, developer reserves the right to change specifications, equipment features, dimensions, prices, and/or plans without notice. All dimensions shown are approximate and plans are not to scale.

NeuHaven Closeout LLC

Antioch, IL 60002
P 847.395.8300
F 847.395.8308

1053 Deertrail Court / Lot 294



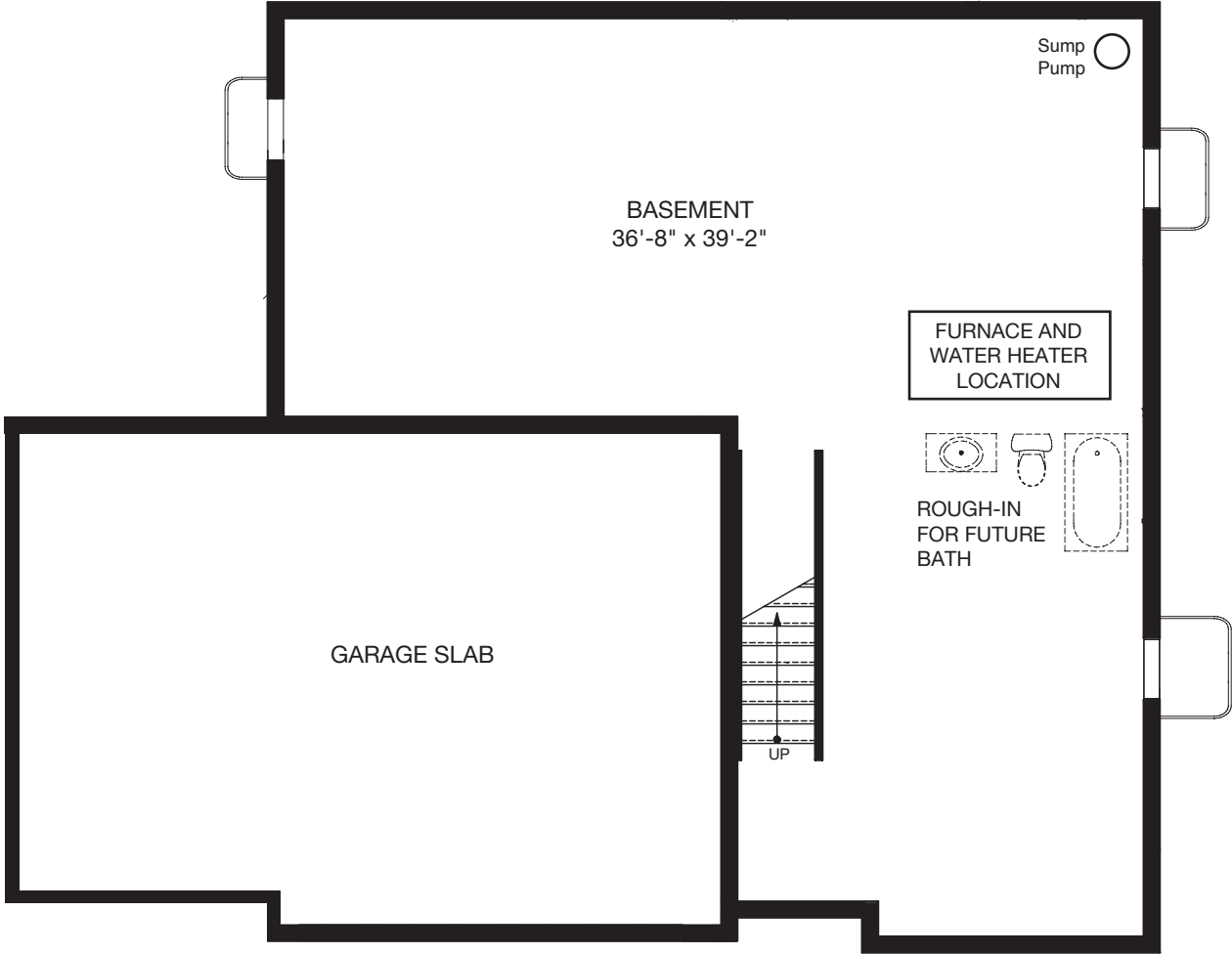
Second Floor Plan

In a continuous effort to improve our product, developer reserves the right to change specifications, equipment features, dimensions, prices, and/or plans without notice. All dimensions shown are approximate and plans are not to scale.

NeuHaven Closeout LLC

Antioch, IL 60002
P 847.395.8300
F 847.395.8308

1053 Deertrail Court / Lot 294



Foundation Plan

In a continuous effort to improve our product, developer reserves the right to change specifications, equipment features, dimensions, prices, and/or plans without notice. All dimensions shown are approximate and plans are not to scale.

March 24, 2009