

NeuHaven Closeout LLC

Antioch, IL 60002

P 847.395.8300

F 847.395.8308

1212 Park View Drive / Lot 463

This spacious two-story home includes two exceptionally large bedrooms, 2-1/2 baths and 2-car garage. The main floor features a separate dining room and living room with a fireplace. A laundry room upstairs eliminates the ups and downs of wash day.

1,573 Sq. Ft. (Approx.)

2 Bedrooms

2.5 Bathrooms

2 Car Garage



Illustration above including exterior styling, materials, color scheme, landscaping and exterior architecture of other units in the townhome building are artist's concept. Actual construction may vary from artist's depiction.

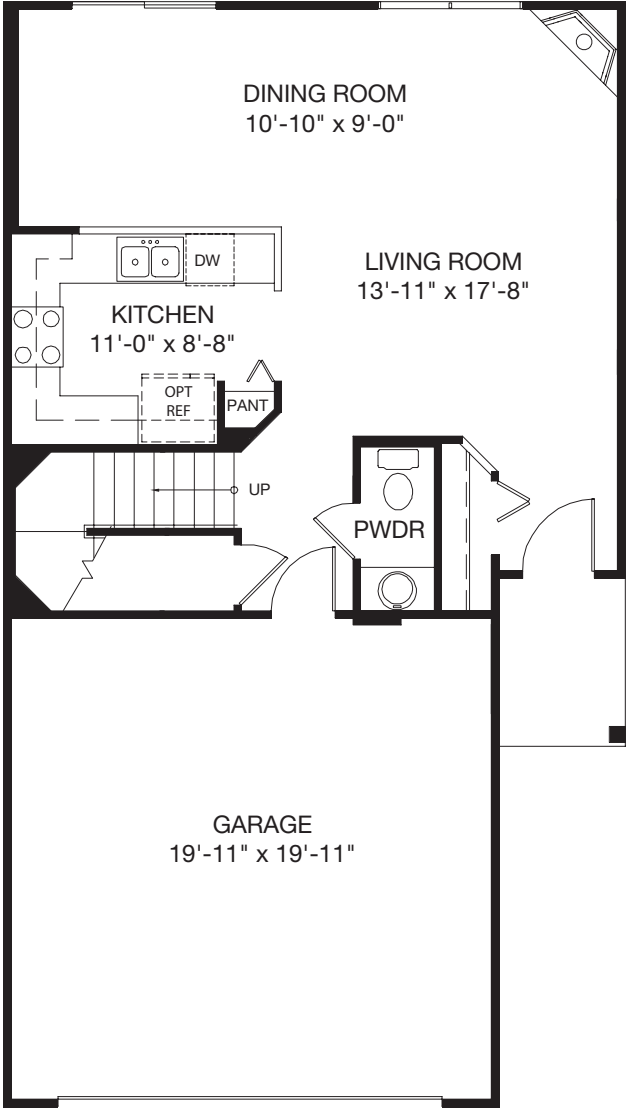
In a continuous effort to improve our product, developer reserves the right to change specifications, equipment features, dimensions, prices, and/or plans without notice. All dimensions shown are approximate and plans are not to scale.

March 1, 2009

NeuHaven Closeout LLC

Antioch, IL 60002
P 847.395.8300
F 847.395.8308

1212 Park View Drive / Lot 463



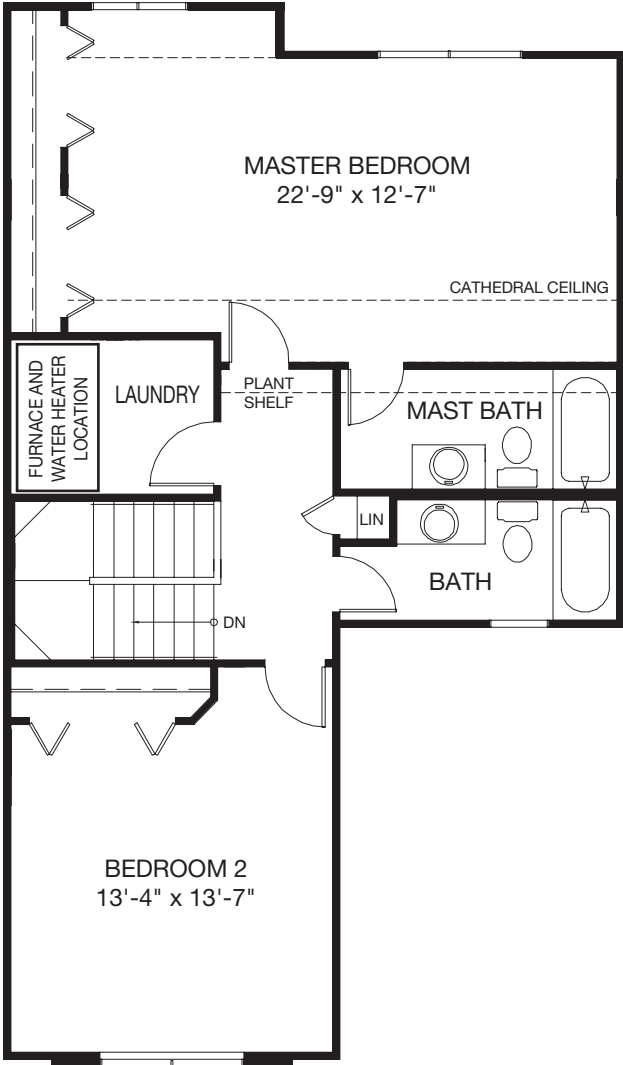
First Floor Plan

In a continuous effort to improve our product, developer reserves the right to change specifications, equipment features, dimensions, prices, and/or plans without notice. All dimensions shown are approximate and plans are not to scale.

NeuHaven Closeout LLC

Antioch, IL 60002
P 847.395.8300
F 847.395.8308

1212 Park View Drive / Lot 463



Second Floor Plan

In a continuous effort to improve our product, developer reserves the right to change specifications, equipment features, dimensions, prices, and/or plans without notice. All dimensions shown are approximate and plans are not to scale.